

## Part 12-460

COMMUNITY FACILITIES<sup>1</sup>**SECTION 12-460-1. PARKS & OPEN SPACE**

Parks and open space, whether for passive or active recreation, are important elements in creating a balanced and healthy living environment. Having recreation opportunities close at hand is important to maintain the physical and social strengths of the community. This section of the General Plan identifies park standards for Centerville City; an overview of existing and proposed parks; and the City's major objectives regarding park development.

1. PARK STANDARDS. Standards vary according to park types which include neighborhood parks, community parks, district parks, and regional parks. However, due to the relatively small size of Centerville, in both area and population, Centerville concentrates only on neighborhood and community parks. Generally accepted standards regarding these park types are as follows:
  - a. *Neighborhood parks*. A neighborhood park will provide activities for children and adults living generally within a ½ mile radius. Neighborhood parks will typically have open lawn areas for a variety of informal field sports, playgrounds, picnic tables and/or shelters, drinking fountains, restrooms, and benches. These parks may also have some amenities with community-wide appeal such as soccer fields and sports courts (volleyball, tennis, basketball).
  - b. *Community Parks*. A community park tends to be larger in acreage than neighborhood parks and provides community-wide services. In addition to facilities found in neighborhood parks, community parks may include multiple pavilions and multiple sports fields for organized team sports such as baseball, football and soccer.

Regarding the total desired amount of park acreage, the City uses as a guideline the general recommendations made by the National Recreation and Parks Association (NRPA) of 10 acres of parks and open space for every 1,000 residents (200 acres of park and open space for a population build out of 20,000 residents).

2. EXISTING AND PROPOSED PARKS. Since the adoption of the 1994 Parks Master Plan, the City has aggressively identified, acquired, and developed significant park acreage. The following table provides a breakdown of the City's current park and open space acreage.

---

<sup>1</sup> Amended by Ordinance No. 2012-27, October. 16, 2012

	Park Name	Developed Acres	Proposed/Undeveloped Acres	Total Acres
Community Parks	Centerville Community Park	21.23	6.00	27.23
	Freedom Hills Park	9.28	18.00	27.28
	Island View Park	6.00	0.00	6.00
	Parrish Creek Parkway	0.00	1.50	1.50
Neighborhood Parks	Centerville Commons	0.68	0.00	0.68
	Founders Park	2.52	0.98	3.50
	Porter-Walton Park	3.00	0.00	3.00
	Smoot Park	6.90	0.00	6.90
School Facilities	Centerville Junior High	12.52	0.00	12.52
	Centerville Elementary	3.63	0.00	3.63
	J.A. Taylor Elementary	6.20	0.00	6.20
	Jenny P. Stewart Elementary	11.07	0.00	11.07
	Reading Elementary	7.09	0.00	7.09
Other Open Space	Centerville Cemetery	8.18	0.00	8.18
	Mountainside	0.00	160.00	160.00
	Parkways & Trail Ways	19.21	0.00	19.21
	Whitaker Museum	1.20	0.00	1.20
<b>Total</b>		<b>118.71</b>	<b>186.48</b>	<b>305.19</b>

Currently the City has a total of 305.2 acres in parks, school open spaces, and other public open spaces (does not account for parks and open space associated with churches, homeowner associations, or other private organizations). Of the 305.2 acres, approximately 119 are developed, 178 are open space, and 8.5 are proposed for improvement (referring to two parcels between City Hall and Founders Park still needing to be acquired and Parrish Creek Parkway). With a population build out of approximately 20,000, this would provide Centerville with 15.26 acres of park/open space per 1,000 residents, which exceeds national recommended standards for total open space. However, developed acres for community and neighborhood parks owned and maintained by the City in 2010 were only 3.24 acres per 1,000 population based on the 2010 Census data for a population of 15,335 residents.

3. GENERAL PARKS OBJECTIVES. Future attention regarding the City's parks and open spaces should focus on the following objectives:
  - a. Maintain the current level of service for developed parks of 3.24 acres per 1,000 residents.
  - b. Acquire the two lots between City Hall and Founders Park (when the opportunity becomes available) and re-landscape Founders Park, City Hall, and the Whitaker's Museum as described in the City Hall & Founders Park Small Master Plan (see section 12-480-2.3a).
  - c. Improve Centerville Community Park by creating 2 additional sports fields within the 6 acres of currently undeveloped acreage.
  - d. Develop the Parrish Creek Parkway, by converting the current restricted wetland area into a public open space amenity.
  - e. Enhance existing parks with additional amenities as recommended by the City's Parks Committee and approved by the City Council.
  - f. Create a master plan for public use of the hillside open space that is currently owned by various government entities.
  - g. As development occurs on the west side, encourage developers to create common areas and natural open space to provide recreational opportunities for the immediate neighborhood.

### **SECTION 12-460-2. TRAILS**

Trails enhance the quality of life of a community by providing recreational opportunities and alternative modes of transportation while promoting better health. According to one study, 57 percent of prospective homebuyers cited a nearby trail as the most desired amenity when buying a home<sup>2</sup>.

Centerville City values its trails and aims to create and maintain an organized network of urban trails connecting residences, parks, schools, churches, and businesses within the city and providing access to the foothill trails, the Legacy Parkway Trail, and adjacent communities. This section of the General Plan identifies existing trails and general objectives regarding trail development and maintenance (see attached map for locations of trails and trailheads).

1. OVERVIEW OF EXISTING TRAILS. Four major trail systems are currently available to residents as depicted on the attached Centerville Trails Master Plan map. These major trail systems include:
  - a. *Hillside Trail Network.*
  - b. *Regional Trail Network.* The Regional Trail Network includes the Legacy Parkway Trail and the Denver and Rio Grand Western (D&RGW) Trail. The D&RGW Trail runs from Roy and will connect with the Legacy Parkway Trail in Centerville. This trail system connects with the Jordan River Parkway trail system which runs through the Salt Lake Valley.
  - c. *Inner-city pathways.* All inner-city pathways should be limited to non-motorized use and prohibit equestrian use.
  - d. *Motorized Trails.* In addition to the above mentioned trails for non-motorized use, the "Fire Break Road" and "bowl area" are currently designated for motorized vehicle usage.
2. GENERAL OBJECTIVES. City officials should focus on the following objectives relating to Centerville's trail system:
  - a. Promote the use of all trails and bikeways through increased signage, maps, and trailhead kiosks

---

<sup>2</sup> Melekian, Bradely. 2006 "From Kitchen to the Wild in 30 Seconds." *New York Times*: September 7, 2006.

- b. Extend the Bonneville Shoreline Trail by creating a continuous north/south non-motorized trail along the eastern foothills
- c. Continue a trails education and activity program
- d. Prepare a specific pedestrian plan for the Parrish Gateway area. Until this plan is developed, encourage pedestrian enhancements for the Parrish Gateway Area
- e. Prepare a specific pedestrian plan for a walking tour of historical sites and structures
- f. Implement a city-wide bike-lane plan
- g. Prevent expansion of motorized use areas on the hillside
- h. Improve pedestrian and biking access to current and future trails west of I-15 to residents living both west and east of I-15; including a trailhead to the Legacy Parkway Trail on 1275 North.

### **SECTION 12-460-3. SCHOOLS**

Schools often serve as focal points of activity in a neighborhood and community. Their location and the uses on their sites can have significant impacts on the development of other uses.

Centerville City will need new school sites to deal with increases in population anticipated in the future. The City and the Davis County School District must, therefore, achieve better coordination in the planning of new school sites and locations. Centerville City should initiate contacts with the School District to achieve the coordination and communication needed. Future school sites should be located in areas that are easily accessible to nearby residential areas. They should not be located on major roadways, but streets where they are located should have patterns which would allow adequate and safe circulation for vehicles coming to and going from the school. The City and the School District should also work together to allow more and better use of school facilities for such community purposes as recreation, community events, and activities.

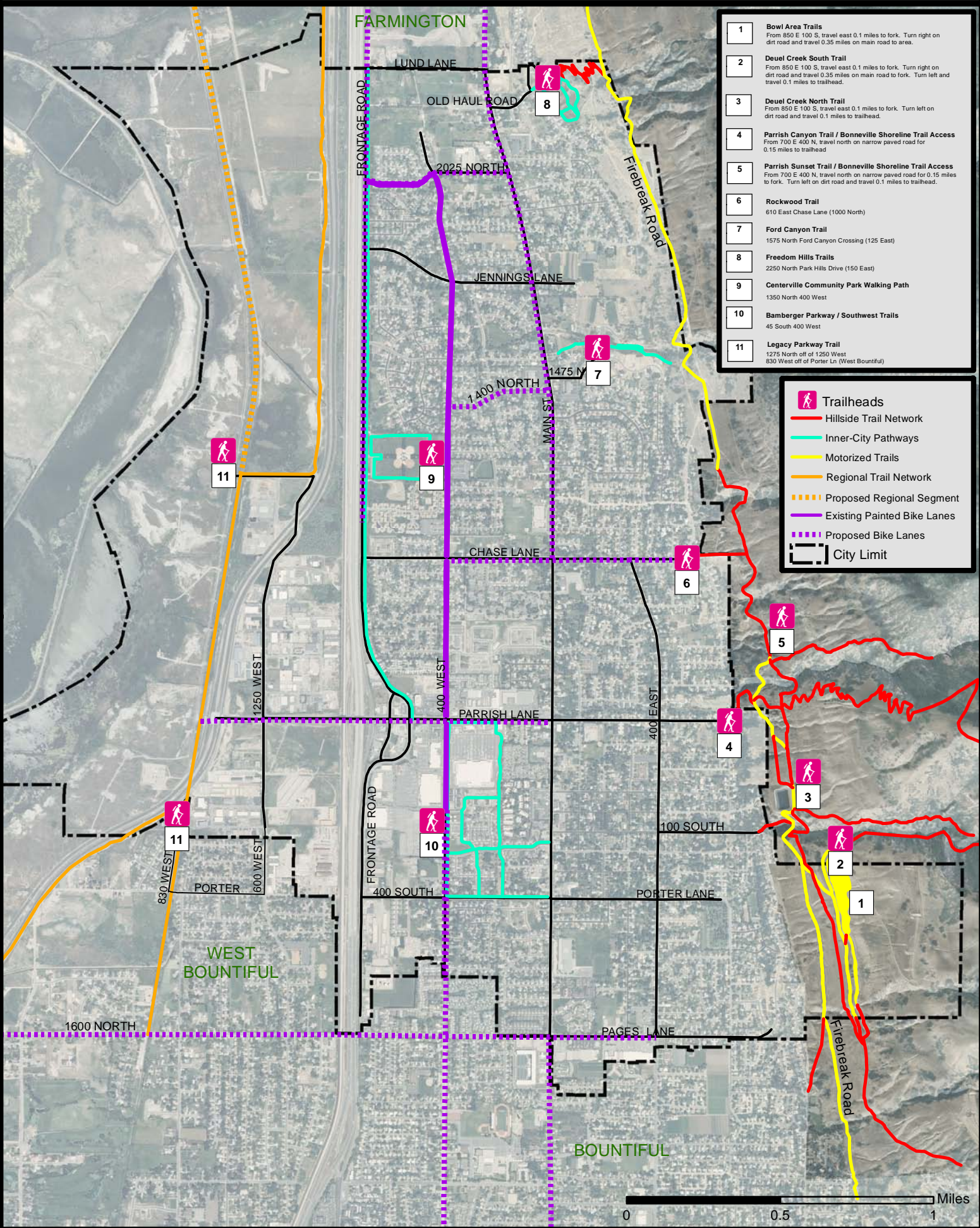
### **SECTION 12-460-4. SOLID WASTE DISPOSAL**

Davis County is facing serious problems in the near future with solid waste disposal. Several solutions have been offered in recent years in an attempt to deal with this problem, including upgrading of the existing landfills at BARD and NDRD, and the construction of a plant to burn garbage and thereby produce steam and electricity. Centerville City should actively support ongoing efforts at the county and regional levels to study and deal with the solid waste disposal problem. Care must be taken to assure City officials and residents that the best possible solution is undertaken in the most cost-effective manner.



Date: 9/26/2012

# Centerville Trails Master Plan



- 1 **Bowl Area Trails**  
From 850 E 100 S, travel east 0.1 miles to fork. Turn right on dirt road and travel 0.35 miles on main road to area.
- 2 **Deuel Creek South Trail**  
From 850 E 100 S, travel east 0.1 miles to fork. Turn right on dirt road and travel 0.35 miles on main road to fork. Turn left and travel 0.1 miles to trailhead.
- 3 **Deuel Creek North Trail**  
From 850 E 100 S, travel east 0.1 miles to fork. Turn left on dirt road and travel 0.1 miles to trailhead.
- 4 **Parrish Canyon Trail / Bonneville Shoreline Trail Access**  
From 700 E 400 N, travel north on narrow paved road for 0.15 miles to trailhead
- 5 **Parrish Sunset Trail / Bonneville Shoreline Trail Access**  
From 700 E 400 N, travel north on narrow paved road for 0.15 miles to fork. Turn left on dirt road and travel 0.1 miles to trailhead.
- 6 **Rockwood Trail**  
610 East Chase Lane (1000 North)
- 7 **Ford Canyon Trail**  
1575 North Ford Canyon Crossing (125 East)
- 8 **Freedom Hills Trails**  
2250 North Park Hills Drive (150 East)
- 9 **Centerville Community Park Walking Path**  
1350 North 400 West
- 10 **Bamberger Parkway / Southwest Trails**  
45 South 400 West
- 11 **Legacy Parkway Trail**  
1275 North off of 1250 West  
830 West off of Porter Ln (West Bountiful)

- Trailheads
- Hillside Trail Network
- Inner-City Pathways
- Motorized Trails
- Regional Trail Network
- Proposed Regional Segment
- Existing Painted Bike Lanes
- Proposed Bike Lanes
- City Limit